

# South Gippy Landcare News

A newsletter for landcarers  
in the South Gippsland  
Landcare Network (SGLN)

Issue 2 Volume 15  
Spring 2011

## Landcare celebrated its 25th anniversary in Victoria with farms open throughout West Gippsland during National Landcare week (Sept 5-11th)

South Gippsland Landcare Network hosted an event in the "Sustainable Agriculture Showcase" at Graeme and Rosemary Trease's property "Seven Streams" at Mardan.

"Seven Streams" has been in the Trease family since 1874, and Graeme and Rosemary were able to show extensive improvement in managing the riparian areas of the property and improving biodiversity and water quality. Rosemary and Graeme are members of the Mardan Mirboo North group and recently were awarded the SGLN Primary producer award. In the past few years the Trease's have removed an extensive infestation of willows across 3.5 kilometres of the 15 km of waterways throughout their property, fenced them off and developed biolinks through planting tube stock and direct seeding.

As part of the field day Danielle Auld from Gippsdairy presented on Gippsdairy's environmental programs and future directions in sustainability. Nicole Russell, Waterwatch coordinator for West Gippsland sampled the water in one of the farm waterways and tested turbidity, pH, EC and phosphorus levels. Nicole

commented on how impressed she was with the water quality.

A highlight of the day was cutting the 25 years anniversary cake.

The field day attracted participants from a wide area, including the Mornington Peninsula. A number of agency staff were also present as visiting the Trease's property was a "must do" event for people who have heard about and been involved with the waterway restorations, and wanted to see the progress in person.

Mirboo North Rotary Club provided an excellent BBQ lunch which was appreciated by all.



Cutting the anniversary cake. More pics on page 12

### inside this issue

Landcare Week	1
SGLN Board Chair's Report	2
IGA Points support Landcare	3
Pest Plant and Animal update	4
SGLN AGM	5
Corner Inlet Connections News	6
Gippy Bees group	7
Land Stewardship	8
You won't die laughing	9
Looking after your soil during wet years	10
Slow The Flow Cluster-Weed Warriors	10
Calendar of events	11
Group updates	12
The Water Sensitive Farm Design project	15
What's all this about Carbon?	16
Carbon Farming Initiative	17
Developing a sense of Humus	19
Koala research information day	19
Koala Gift Cards	20

## A Fantastic End to Landcare Week 2011.

As Landcare Week drew to a close on Saturday 10th September, the South Gippsland Landcare Network held its AGM in Leongatha.

Another great year for Landcare in South Gippsland, we had a number of new projects on the go and this will not only deliver high quality on ground outcomes but also assisted in raising awareness across the region

In 2010/11, South Gippsland Landcare Network (SGLN) undertook 13 projects totally \$615,000, delivering

- 55,545 plants in the ground

- Over 27ha of land revegetated
- 253.5ha remnant vegetation protected
- 22.13km of fencing was erected
- 2 kg of direct seeding completed
- 467ha of weeds controlled
- 25.8 ha of land under soil management actions
- 11 information sessions/ field days delivered
- 5 farm planning and management training courses delivered.

Whilst it is the Network that is coordinating the work, it is a dedicated band of Landcare volunteers that undertake the on-ground work. The figures  
cont on page 5



# SGLN Board Chair Report

## This year sees the 25th Anniversary celebrations for Landcare in Victoria.

Whilst we can look back at 25 years of outstanding achievements in sustainable land management and habitat protection and enhancement, the tenure of funding for these activities remains a year to year, project by project proposition. It was evident to the Board some years ago that we would have to look beyond a simple mix of tenuous State and Federal funding to maintain our staff, infrastructure and activities. As part of the Board's strategy to increase the diversity of funding for the network, we started looking at iconic projects which might attract semi-government and private funding. Two of these projects, One Million Trees and the Strzelecki Koalas have been successful in attracting a total of \$40,000 and \$65,000 respectively to date. These numbers clearly demonstrate simple ideas can grow to very successful projects but also indicates the need to develop projects which have wider public appeal than simply water catchment quality, habitat enhancement or sustainable agricultural practices.

This year saw us launch the South Gippsland Landcare Fund which gives individuals or organisations the ability to make tax-deductible donations to the Network. Whilst the use of these funds is quite prescriptive, we do have enough flexibility to continue our support for on-ground works. Like our gift cards, the Fund is a work in progress and the Board is confident that over the next few years, with our continued support, like the Million Trees and Koala Projects, the fund will become a significant source of funding for the Network's activities. Projects like these take years to develop and become financially successful, but they have proven that perseverance pays. This year also saw the successful application for funding totalling \$615,000 across 13 projects including the Corner Inlet Connections Project and the Tarwin Catchment Enhancement Project. Most of the funding for these Projects came via the WGCMA and has been crucial in enabling us to retain the staff we have. It's worth noting that funding has changed to the extent that in the last few years we have seen funding for facilitators dry up and replaced by funding for Project Officers. This implies we must have projects to manage in order to keep the staff we have, but, sadly the days of facilitators directly assisting groups are long gone. We still await news of funding arrangements for the Network Coordinator's position beyond the middle of next year.

The diverse nature of our funding puts greater governance demands on the Network. In order to stay ahead of the governance game, so-to-speak, one of the duties of the Board in the next year will be to review and expand our sub-committees with the view to not only implement best practice standards of governance, but also help focus on key areas of concern to the Network. One of those areas of concern is membership. SGLN member numbers are not growing significantly and we only have a small percentage of commercial farmers as

members. The Board is currently working on several strategies to improve this situation but I can see the need for a specialist subcommittee to look at nothing else but growing membership. Relevance to commercial farmers will be top of the agenda for this sub-committee. When the final structure of these committees has been determined by the incoming Chairman and board, then our wider membership will be invited to fill vacancies on these committees.

A key component of an organisation's ability to leverage its influence is to form partnerships. In the last two years we have seen further development of partnerships with organisations such as South Gippsland Water, HVP, Melbourne Water, WGCMA, PPWCMA and SP Ausnet. One of our more novel partnerships was with the General Practice Alliance who provided funding to present "You Won't Die Laughing" which saw 195 people enjoy an entertaining evening and learn something about looking after your physical and mental health. Our membership can expect to hear of more partnerships in the near future.

If the health of an organisation can be judged by the enthusiasm of its members, if not its gross numbers, then we do indeed have a very healthy organisation. It is a pleasure to work with staff and, volunteers that show so much passion and enthusiasm for what they do. Firstly, our staff. We have been fortunate that in the last couple of years have seen very low staff turnover enabling us develop stability, continuity and expertise with in the network. You need only to attend the Mirboo North Arty Gras or our Awards night to see our staff going the extra yard for the cause. I wish to thank Courtney, Jill, Kathleen and Kate for efforts above and beyond what any normal employer expects. Whether it is suited-up as a Koala or ragwort, promoting Landcare or managing one of our Projects you all do an outstanding job and multiply your efforts by showing other workplaces what "team" is all about. Tony Gardner has moved over to the WGCMA and we thank Tony for his contribution to the Network during his stay with us along with Geoff Trease who worked part-time for the Network on the Tarwin Project. Belinda is our Network Coordinator and Executive Officer. Belinda does an outstanding job in support of the Network, staff and Board. Anyone who works with Belinda quickly understands how lucky we are to have her as part of our Network, let alone running it. The Network is also blessed to have a diverse, talented and effective board. Board meetings are rarely boring and a pleasure to Chair - a task I will miss. Our exchanges are open, honest and productive. I wish to thank the board for their time, dedication and support in my two years as Chair. To those of our wider membership who are members of the Public Fund etc special thanks for your contribution. Finally, I would like to thank all our partner organisations and sponsors. In particular, the WGCMA for the ongoing strident support. That support is often "inkind" and reveals itself in the form of administration assistance from Janine Clark and Network support from Phil McGarry and Martin Fuller.

**Mark Uren, Chair's Report SGLN AGM**

### Editorial and Business Office

### South Gippsland Landcare Network

PO Box 419

Leongatha VIC 3953

Ph: (03) 5662 5759

Fax: (03) 5662 5569

Email: [sgln@landcare.net](mailto:sgln@landcare.net)

[www.sgln.org.au](http://www.sgln.org.au)

### Editorial Group

Belinda Brennan

Kathleen Bartlett

Kate Williams

Jill Vella

Courtney Lever

### Advertising and Layout

Jill Vella

### Printing

Larkin Printers

Leongatha, Victoria

Ph: (03) 5662 3284

Fax: (03) 5662 3851

### Subscription

\$33 inc GST per family per year (Network Membership), or membership of a South Gippsland Landcare Group.

South Gippy Landcare News is a joint publication between all Landcare groups in the South Gippsland Landcare Network.

© All material published in the South Gippy Landcare News is copyright. It can be reproduced with acknowledgement to the author and this publication.

The South Gippsland Landcare Network does not necessarily endorse the content of this publication. It is by no means a complete reference to the topics contained in it.

# IGA points support the SGLN Landcare Fund

You can support the SGLN Fund by donating your points at Michaels Supa IGA Supermarkets in Leongatha and Korumburra

The South Gippsland Landcare Network is joining the Michaels SUPA IGA Community Rewards Program. All funds raised for the program will be directly allocated to SGLN's One Million Trees for South Gippsland Program. Effectively this means points for trees (more correctly indigenous plants).

The Landcare Team sold sausages outside Michaels IGA Leongatha store on Thursday 15th September and raised \$171.00, and asked people to donate their points to Landcare on the day.

Supermarket shoppers at Michael's Supa IGA are able to join the community rewards program and donate all their shopping points to the Landcare Network.

If you would like to be involved you can sign up at either Michaels Supa IGA supermarket - Leongatha or Korumburra, or fill in the form enclosed with your newsletter and give it to your checkout operator at either store.

Remember – the more points we raise the more trees are planted in South Gippsland!



Courtney, Mark and Belinda cook up a storm at Michael's Supa IGA market day.



Arie enjoys the fruits of his labours after cooking sausages all morning.



## F & M SMOLDERS REVEGETATION

2350 Meeniyan Promontory Road,  
Fish Creek 3959

Tel; 03 5683 2337 Mob; 0438 609 285  
email;

[smoldersrevegetation@wideband.net.au](mailto:smoldersrevegetation@wideband.net.au)

Plant propagation \* Contract planting \*  
Site preparation

Call Frank or Michaela for Plant Sales  
or to discuss your Native Revegetation  
needs.

Taking orders now for this planting  
season.

MICHAEL'S SUPA IGA  
**Community REWARDS**  
Supporting

**You can make a difference by donating your shopping points**

SOUTH GIPPSLAND LANDCARE NETWORK

**One Million Trees Project for South Gippsland.**

Help Landcare to plant one million indigenous plants over 5 years.

## Pest Plant and Animal Projects Update: By Kate Williams Landcare Project Officer.

### Stream Restoration Field Day- From Weeds to Wonder

Controlling invasive plants and trees along riparian corridors is an essential step if the end goal is to promote native plant regeneration. Without successful control of invasive plants, existing native vegetation is also under threat from being smothered or literally choked by the weeds.

Riparian zones are particularly prone to weed invasion and are often invaded by not only one, but a number of weed species i.e. Blackberries, Wondering Jew, Blue periwinkle (and the list goes on). This susceptibility to invasion is a result of the natural disturbance processes associated with flooding, favourable environmental conditions and the continued input of weed propagules from upstream and adjacent areas. The impacts of human activities have also increased the likelihood of weeds establishing in riparian zones.

Aquatic weeds may also need to be controlled as part of a stream restoration project. Aquatic plants are considered weeds for many of the same reason as any other type of weed

for example they compete with native species and reduce biodiversity.

Establishing a successful management program, (as with weeds in the riparian zone) depends on the resources available, the weeds present and the ability to carry out effective control methods.

**The field day to be held on Wednesday the 19th of October will provide practical information for those with riparian areas and waterways on their property looking to manage weeds.**

Topics covered:

Department of Primary Industries-  
How to identify and what to do with

weed alert riparian and aquatic weeds  
David Carew, Melbourne Water-  
Techniques and preparation methods  
to revegetate your stream

Kate Williams, SGLN-How to develop a  
weed management plan

Where: Mark Walter's property on the  
Bass Valley Road, Loch

When: Wednesday the 19th of Oct.  
10.00am-12.30pm

RSVP: for catering purposes to Kate  
Williams on 0428 317 928 or Kathleen  
Bartlett on 0400 141 929

Free Lunch provided

This event is being hosted by the  
South Gippsland Landcare Network  
with the support of Melbourne  
Water, Port Phillip and Westernport  
Catchment Management Authority,  
the Department of Primary Industries  
and the South Gippsland Community  
Weeds Taskforce.



Photo: Tradescantia control is one of the issues that will be discussed at the field day.

do not include funds that the individual Landcare groups may have received or account for the many thousands of hours that members put into protecting and enhancing the environment in South Gippsland. The Network currently has 19 Landcare Groups, with over 700 members – most of those family memberships. They are out there planting trees, spraying weeds, managing soil, and protecting our precious waterways. It is the Network's role to support the Landcare groups to undertake this vital work.

Elections are never a favourite part of any AGM, but South Gippsland Landcare Network proved the exception again this year.

Congratulations are in order for our newly appointed chair, Stephen Hoole. Stephen enters his third year on the Board and has been involved in Landcare for about 6 years now after purchasing a 40 acre bush block in Allambee at the end of 2005, he brings with him wealth of experience and enthusiasm to the role.

Congratulations to Dawn Marotti, Arawata Landcare Group who was appointed Secretary/Treasurer. Dawn

has been a member of Arawata Landcare group for about 8 years, and has been Secretary/Treasurer for 5 years. Dawn and her husband Mark, have planted

about 4,000 trees on the creek sides and steep areas of our block. Dawn and Mark were the recipients of the Dick Howarth award for Individual Landcarer in 2001 for outstanding weed control.



So the Network is in good hands as we move into 2011/12.

Thanks are extended to Mark Uren and Jean Carnell who both stepped down from Chair's and Secretary/ Treasurer's roles respectively. We welcome back to Rosemary Trease who renominated for the Board and welcome Board new comer Diana Droog from the Franklin River Landcare Group, and thank you to Peter Fell for his time on the Board.

The AGM finished up with a presentation on the importance of the sea grass in Corner Inlet and how its health is linked to the health the catchment by Jonathon Stevenson, Marine ranger, Parks Victoria. Attendees were fascinated as Jonathon explained what lives in the sea grass (far too many creatures to mention here) and how we can all get involved in looking after our precious resources in the water and on land.

*Mark Uren (Left) outgoing Chair of the SGLN Board congratulates Stephen Hoole newly elected SGLN Board Chair*

## Leading Edge Computers, Leongatha offers

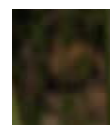
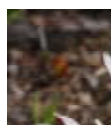
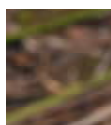
- **10% discount on selected software, ink and toner and computer accessories on presentation of your membership card.**
- **\$20 donation to SGLN for any computer or laptop purchased**
- **Additional \$100 donation to SGLN for any equipment purchased using our OptiRent leasing options.**

**This business is a valued SGLN partner, and supports the network and it's members. Show your membership card and save.**



**32 Bair St, Leongatha, VIC 3953  
(03) 5662 5697**

## The response of Orchids to the 2009 Bushfires



**Thursday the 3rd of November 2011**

**Foster Golf Club 7.00pm-8.00pm Supper Provided, All Welcome**

Presenter: Michael Duncan– Scientist from the Department of Sustainability and the Environment's (DSE) Arthur Rylah Institute (ARI)

Learn about;

- Michael's research project on the response of native orchids to the 2009 bushfires at Wilsons Promontory National Park
- The rare Eastern Spider Orchid (*Caladenia orientalis*) and other orchid species in Victoria that flower when their habitat is burnt

Come along for dinner at the bistro before hand (at own cost).

Please RSVP by Tuesday the 1st of November 2011 (for supper catering purposes). For more information or to RSVP, please contact Kate Williams [katew@wgcm.vic.gov.au](mailto:katew@wgcm.vic.gov.au) phone, 5662 5759 or mobile 0428 317 928.

Photos above: courtesy of Michael Duncan, ARI.



CARING  
FOR  
OUR  
COUNTRY



## DPI Farmplan 21 & iFarm training to be held in Fish Creek in October- November 2011.

A great opportunity exists for those land managers keen to complete a whole farm plan course. The Department of Primary Industries, (DPI) in partnership with the South Gippsland Landcare Network (SGLN) is running a FarmPlan21 course locally and places are now available. FarmPlan21 is a DPI course that delivers whole farm planning with the use of iFarm (computerised mapping software).

The development of a land management or whole farm plan is an ideal way to set priorities and implement them whilst identifying issues and addressing them in the process. This course was completed last year in Foster by 11 individuals keen to see their farm's potential realised - be it for lifestyle, production, biodiversity or all three.

The course is run in a friendly group environment by a DPI Whole Farm Planning Officer along with key-note speakers and expert IT presenters. Included in the course; an aerial photo of your property, provision of iFarm mapping software and training, environmental and productivity information about your property, classroom sessions plus access to field days, workshops, talks and sessions with experts, course material and notes and an assessment towards Diplomas of Conservation and Land Management or Agriculture.

The course is held weekly over 7 workshops at 3.45hours per workshop in Fish Creek starting Tuesday the 11th of October 2011 time TBC (will depend on majority preference for day or night sessions amongst participants). Enrollments close Friday the 30th of September 2011. Fee of \$110 payable when attendance is confirmed.

Contact Kate Williams, South Gippsland Landcare Network Project Officer email: [katew@wgcm.vic.gov.au](mailto:katew@wgcm.vic.gov.au); office: 5662 5759 or mobile: 0428 317 928.

# Gippybees club forms in South Gippsland

Beekeepers get a BUZZ out of their satisfying and rewarding hobby.

Despite it raining all day and water flowing across many South Gippsland's roads, over 50 people attended the Inaugural Meeting of the South Gippsland Beekeepers Club, fondly known as 'Gippybees'.

The South Gippsland Club, is a division of the Gippsland Apiarists Association GAA, and now boasts 41 members. The club has equal numbers of BEEginners and experienced beekeepers. It was pleasing to see 10 families join. Our youngest member is 4 years old. There is a good mix ages and genders as well.

Office holders for the 2011-2012 year are President: Keith Grey, Vice President: Robert Fisher, Secretary: Lyn Howell, Treasurer: Sharon Fisher and Practical Sessions Coordinator & GAA Liaison: Howard Stevens.

The first year joining fee is \$46 (for annual single membership) and families can become members for \$62.

Club meetings will be held at Leongatha on the 2nd Thursday of each month but some months will be replaced by a Saturday or Sunday afternoon 'Field Meeting' where members will be able to get 'hands on' experience under the watchful eye of a more experienced beekeeper.

The next meeting of the club is at St Peters Church Hall, McCartin St, Leongatha on Thurs 11 August 2011 at 7.30pm. All welcome.

For further information on South Gippsland Beekeepers, email us on [gippybees@gmail.com](mailto:gippybees@gmail.com) or ring Sharon Swan 56644323 or Keith Grey on 56688250 or phone/text on 0427688250.



*Beekeeping is for all the family Vice President -Robert, Treasurer, Sharon and children Tahlia (7) and Kelsey(4) getting ready to open a hive.*



*Left to right:*

*Vice President: Robert Fisher, Treasurer: Sharon Swan, President: Keith Grey, Howard Stevens : Practical Sessions and Field Day Co-ordinator and Rob Spratt Assistant Practical Sessions and Field Day Co-ordinator.*



**SG Hire, Leongatha offers - 10% off all hire agreements Monday to Friday**

**This business is a valued SGLN partner, and supports the network and it's members. Show your membership card and save.**

17 Anderson Street  
Leongatha Vic 3953  
PH 03 56623783  
FAX 03 56623275  
[www.sghire.coma.u](http://www.sghire.coma.u)

# Westernport Targeted Land Stewardship Program

## Farmers looking after their farm for future generations

After a hugely successful previous year, the Westernport Targeted Land Stewardship program is looking for more farmers across the Westernport Catchment to participate in its program in 2011/2012.

The program will fund farmers to undertake actions that improve the health of their soil (such as liming, adding microbes or adding organic fertiliser), to protect remnant vegetation and undertake revegetation. Additionally, the program will also subsidise farmers to participate in training courses such as soil, Whole Farm Planning and state of the art farm mapping courses.

In 2010/2011 the program assisted over 70 farmers across the catchment to become a better land steward. A Land Steward is someone who looks after their land and improves its health for future generations.

With the help of Targeted Land Stewardship funding, beef farmer Ray Boys has been improving the quality of his pasture and health of his soil by adding chicken manure to his steep property in the Strzelecki Hills.

Ray has used chicken manure on his pasture for several years as an alternative to traditional fertiliser regimes, and was able with the help of the Land Stewardship program, to receive extra funding to continue this process.

Soil analysis on the property has also since found Ray has

started the chicken manure regime his pH has become around 6.2 from around 4.2 to 5 when he first brought the property 10 years ago.

"I use chicken manure as it has a far lower cost than super and is less acidifying to the soil. It also limes the soil at the same time."

Jake Follett, a beef farmer from Nyora, also made use of the program to receive funding to protect and fence off his remnant vegetation.

"The trees were looking like they were about to die from being ringbarked from the stock" He said.

By fencing off the trees, Jake will now plant supplementary plants underneath, providing a perfect shelter belt for his stock. Additionally, stock no longer wonder into the remnant vegetation, allowing for far more efficient stock control.

"This program was easy to do and provided me with the materials to get the work done."

The 2011/2012 program is looking for anyone in the Westernport catchment who wants to undertake similar work on their property. Come along to our stall at the dairy expo for more information (stall number 29), or contact Kathleen Bartlett on 0400 141 929 or [kathleenb@wgcm.vic.gov.au](mailto:kathleenb@wgcm.vic.gov.au)

We apologise to any one who has been trying to ring us over the past month or so and hasn't been able to reach us or leave a message.

A computer upgrade has played havoc with our phone system we have been without voicemail for some weeks. Luckily it has just been fixed and so you are now able to leave us messages again.

We are very sorry about this. If you need us you are always able to try our mobile phones. Belinda is 0409 004901; Jill is 0417 380273; Kate is 0428 317928 and Kathleen is 0400 141929



AGMART - Leongatha (NRI)  
Phone: 03 5662 5590  
Fax: 03 5662 4141  
Address: 19-23 Watson Road  
LEONGATHA  
VIC 3953

**This business is a valued SGLN partner, and supports the network and it's members. Show your membership card and save.**

### Agmart, Leongatha offers

- **5% off all Gallagher/Thunderbird fencing equipment**
- **2% off Wire**
- **2% off Gates**
- **2% off Posts**
- **5% off Chemicals**
- **10% off Boots and clothing**
- **This excludes already discounted items and sale items.**

# You won't die laughing

We didn't die laughing and we had a great night.

Close to 200 people enjoyed a good belly laugh on Friday night when they came to a presentation of "You Won't Die Laughing".

General Practice Alliance (GPA) South Gippsland and South Gippsland Landcare Network hosted the presentation with the message that laughing never hurt anyone and we all need to laugh a little bit more to help deal with the stresses of our daily lives.

We all have stressful situations in our lives, and it is how we handle them that makes the difference between getting sick and getting through it all. The ability to laugh at ourselves can help release stress and make difficult situations just a little easier to handle.

In their careers as a nurse and doctor Patricia Cameron –Hill and Shayne Yates observed first hand the causes and consequences of stress. Laughter is what they prescribe and laughter is what they dispense to the audience.

Did you know you can deal with pain better when you are smiling? Patients in hospitals cope with the whole ordeal better if they laugh.

We also found out that it is hard to take anyone seriously and not smile when they are wearing a silly hat – frogs, chickens, birthday candles, a lady bug and some fancy swirls hat were all part of the evening.

Phil Fowler got up and showed us all how to shake those maracas as we learnt how music can lighten the mood, and lift our spirits.

Peter Fell, SGLN Board member and MC for the night "With so many serious things happening in the world we sometimes forget to have a laugh. Tonight gave us the chance to remember the funnier side of life and that laughing is fun and it makes us all feel good".



Peter Fell of Foster was the MC for the night



You cannot help but smile with a chicken on your head



131 Commercial Street, Korumburra

Contact: Roly Jones

Phone: 0408 591 688

rolycountrywide@gmail.com

**This business is a valued SGLN partner, and supports the network and it's members. Show your membership card and save.**

**CountryWide Clothing and Safety Supplies Korumburra offers - 10% off all stock not already reduced.**

## Looking after your soil during wet years-tracks, drainage and landslips

### Looking after your soils during wet weather was hot on the agenda at a field day hosted by the South Gippsland Landcare Network

Over 60 people from across Gippsland ventured into the Strzeleckis to Tetoora Road Hall to listen about landslips, track design and drainage in periods of wet weather.

The field day was tremendously well received by the crowd, most of whom had experienced their own problems at properties caused by the previous few months of heavy rains.

Guest speakers included Roger Wrigley from the University of Melbourne and Monash University, Frank Mickan from the DPI, Geoff Trease from the South Gippsland Seedbank and Bruce Gardner from Melbourne Water.

Another feature of the day included a farm walk on a nearby property, which like some properties in the area is extremely steep and has a large amount of problems with subsurface runoff and landslips.

This allowed participants to study and view a landslip on site with the guest speakers providing information to participants.

With landslips appearing all over the hills this season, Roger Wrigley gave an explanation of the importance of whole farm planning in order to mitigate future landslips on your property, as well as ways to better understand how and why your landslip formed.

He talk also included the best way to design track drainage to ensure your farm is able to cope with wet weather.

Looking after flatter paddocks was also discussed. Frank Mickan from the DPI summarised different types of subsurface and surface drainage that can be used

to improve drainage in flat areas. He highlighted the importance of understanding soil types and characteristics when deciding which drains were best for you.

Other speakers on the day included Geoff Trease, from the South Gippsland Seedbank who spoke about the most cost effective way of removing the threat of landslips- planting out slips and soaks and Bruce Gardner from Melbourne Water spoke about Water Sensitive Farm Design funding options for farmers in the area.

The Landcare Network would like to thank the Strzelecki Lions Club for providing lunch on the day.



Field day participants during a farm walk considering land slip mitigation techniques.

## Slow the Flow cluster -Weed Warriors

Poowong, Triholm and Mt Lyall Landcare Groups recently held a discussion evening on weed control with the Department of Primary Industries Senior Officers to express their concern at the lack of interest in controlling weeds in their area.

They have finally got the attention of the Minister, Peter Walsh, and he has directed a trial program for the Western Port area, in which they are a major partner.

The Minister has directed Gerry O'Keefe, the DPI Enforcement Officer to work with the Landcare group from October to February to educate and direct tardy landholders to have their ragwort problems under control by January 2012.

Gerry will inspect them in late January and if the job is satisfactory, that is it. If the job is not satisfactory, he will apply an on-the-spot fine of \$800 and issue a direction notice for the 2012/13 season. This will mean that the

landowner will do the job to the satisfaction of the Officer or the DPI will put a contractor into the land and do the control at the landholders expense. They will also be taken to court to be fined for non compliance and have to pay any expenses not recovered. One landholder was fined \$200,000 recently. This should make people sit up and take notice. The members of Westernport Landcare groups are already giving up names of Landholders who are causing concern. Let Jeff Clark know if you have any problem land near you.

As part of the education process the four SGLN Westernport Landcare groups will stage a "Weed information Expo" in Poowong on Sunday the 6th of November. This will involve the agents of the chemical companies, weed equipment suppliers, DPI weed specialists and Landcare. They also hope to get a helicopter to be onsite to talk to interested parties.

Contact Jeff on 5659 2384 for more information.

# Calendar of Events

Whats happening in Landcare over the next few months.

**September 28th and 29th SGLN will be at the Dairy expo at the Korumburra Showgrounds.**

**October 11th- Carbon on Farms Trees and Soil, Dakers Centre, Leongatha 7.30 -9.30pm. See page 18 for details.**

**October 12th- Healthy Soils forum, Latrobe Convention Centre, Traralgon 10.00am-3.00pm. See page 18 for details.**

**October 13th. SGLN Board meeting, Leongatha.**

**October 15th SGLN IS A FINALIST IN THE 2011 REGIONAL ACHIEVEMENT AND COMMUNITY AWARDS!!! The Gala Awards Presentation is at the Mercure Ballarat Hotel and Convention Centre.**

**October 19th- "From Weeds to Wonder" stream restoration field day Mark Walter's Property Bass Valley Road Loch. A practical field day on getting rid of pesky weeds and turning your stream into something to be awed. See page 4 for details.**

**October 21st - the Healthy Soils: Sustainable Farms project is holding a Soil Carbon workshop; "Developing a sense of Humus" at Scott and Suzanne Wightman's, Mardan. See page 19 for details.**

**October 27th- Koala Research Information session, see page 19 for details.**

**November 3rd. The response of Orchids to the 2009 Bushfires Foster Golf Club 7.00pm-8.00pm Supper Provided. See page 6 for details.**

**November 6th - "Weed information Expo" in Poowong, see page 10 for details.**

**November 15th State Landcare Conference, Melbourne; see <http://www.landcarevic.net.au/news/registrations-open-for-the-25th-anniversary-of-landcare-conference>**

**November 16th – State Landcare Awards**

**December 13th - SGLN Board meeting, Leongatha.**

**December/January TBA Blackberry rust field day.**

**Please see articles in newsletter for further details of all sessions.**

For all the latest events and further details please check our website

[www.sgln.org.au](http://www.sgln.org.au)



## Insurance

16 McCartin St, Leongatha, VIC  
3953  
(03) 5662 2602

**This business is a valued SGLN partner, and supports the network and it's members. Show your membership card and save.**

**Elders Insurance, Leongatha and Korumburra offers**

- **\$25 payment to SGLN when SGLN members take out (or renew) farm or business insurance**
- **\$15 payment to SGLN when SGLN members take out (or renew) personal insurance**

## Landcare Week field day photos



Rosemary Trease talks to the group about the farm plans, and their riparian restorations



Heres looking at you cow!

## 10/11 Group Reports

### Agnes River & District

After the excitement (Arie Bos State Landcare Award and visit to Canberra for the National Awards) last year we've been embarrassingly quiet this year. No major projects on the go, just a bit of maintenance on the public sites that we have an interest in; Hazel Park Flora Reserve and the Welshpool/Port Welshpool Trail. The group hosted the Nerrena Landcare group in early February for a look around our group area followed by a BBQ at Arie's. Jill and Kate were in attendance to share their knowledge and we found it to be a very worthwhile and enjoyable event. We hope to hold similar events as host

or hostee in the future. We recommend other Landcare groups visit or host other groups, it is a fantastic experience and you learn lots. We had Kate along at our last meeting with her detailed map of groundworks in our district, it created quite a bit of interest and highlighted areas( in particular gullies) that need some input.

### Allambee Community

With a steady group of 16 financial families the Allambee Community Landcare group has held four meetings since the last Network AGM. In October 2010 we held a "Weeds Field Day" at the property of Stephen Hoole.

Carolyn Ferguson, the Pest Plant and Environment officer for the Baw Baw Shire, was our guest speaker. Carolyn brought along many samples of weeds for our members to identify and spoke of the varying roles of the Shire and the landholder's responsibility with regard to weed control. Members and friends then took a walk around Stephen's property and identified the various weeds that were apparent and suggested appropriate control measures. Stephen's bush pathway also presented the group with many different indigenous plants that were readily identified by Ian Cornthwaite (Strzelecki Plant Farm owner). The afternoon concluded with a BBQ supplied by the group and it was a good chance for all to catch up.

Our January get together at Mt Worth Park was well attended, with some members bringing along friends to join in our casual social afternoon. At our AGM in March we welcomed Belinda Brennan and Geoff Trease to the meeting. It was great to have Belinda outline the happenings at the Network and Geoff provided the group with further information about the Tarwin River Enhancement Project. As a result of his talk, several of our members have undertaken projects to fence, plant and protect many areas of significance along Watkins Creek- a tributary of the Tarwin River. Due to the extremely heavy rainfall earlier in the year many of our landholders have been delayed with their projects as access to these areas is impossible until things dry out a little.

In May we invited Steve Wentworth from HVP Plantations to talk to the group about the work they are doing in the Strzelecki ranges with particular attention to the Strzelecki koala habitat. Steve noted that in the past 60 years the amount of forested area in the Strzelecki ranges has drastically increased. 10,000 ha of plantation and 6,000 ha of native forest were lost during the 2009 Gippsland fires and it is anticipated it will take 8 years to replant the burnt areas.

### Allambee South

The Allambee South Landcare Group restarted in 2010/11 after a couple of quiet years. The Group received \$11,000 via the Network for a Friends of Strzelecki Koala project. The funding

was provided by SPAusnet. With recent wet weather, there has been delays in the on ground works component of the project, with the work expected to be completed by December 2011. A number of members were also involved in the Tarwin Catchment Enhancement Project. The Network has provided the group with an AO size aerial of the group area; this will be used by the group members for future planning. The Group has a spray unit available for members and despite wet weather, the unit continues to be popular with a focus on weed control amongst group members.

## Arawata

Tree planting was again lower this year for our group where individuals did their own thing. The Reservoir project is nigh on complete with Martin Chatfield who now works for South Gippsland Water as Environmental Officer around their storages. There is still some tidying up to do at the Western reservoir, sow down in the short term, tracks to finish and fencing as well. Weeds was again the biggest issue that we could focus on this year as we managed to have the DPI do the only Enforcement in the state and to my thinking did that again poorly as it leaves a lot to be desired regarding interpretation and leniency on behalf of the DPI Officers. WGCMA through Phil MC Garry opened up a Grant opportunity for the group to apply for \$5500 for which we were successful. To enhance the fund I have spoken to Brett Vurlov regarding matching the funds for which each individual will have apply for 500 trees to complement the grant.

## Foster North

Foster North Landcare Group has 51 property members. As Foster is the "Gateway to the Prom" and mainly a tourist town one third of our members are City based with hobby farms in the district. All though our membership is consistent, city members have little time to attend our bi-monthly meetings or are unable to be involved in field days or plantings. Our new Committee is endeavouring to revitalise the group and raise the Groups profile by improved communication, a new logo and guest speakers at alternate meetings. Our recent meeting featured local vet David Lucas who gave an excellent presentation on the koalas of Snake Island and upcoming meetings will

have presentations on the Bird Life of the Corner Inlet area and on Fox eradication.

Many of our members are retired and some find it too labour intensive to plant or weed as much as they would like to so we have become affiliated with South Gippsland Secondary College as our Junior Landcare members. We hope this partnership will result in new joint projects for both age groups. The College is interested in establishing a wetland area near the rail trail just out of Foster which will benefit adjacent farms, bike riders, bush walkers and tourists not to mention being a great educational tool.

## Franklin River

The major activity for the group was the completion of the plaque at the Rotunda. The group is also seeking restoration of camping rights at the reserve, and additional advertising. The Rotunda is used by the Group for Landcare notices, and as a minor fundraiser, space is available for paid advertisements. The group has been seeking restoration of camping rights at the reserve at the back of the Rotunda, and Councilor Jeanette Harding has indicated she will offer support in this endeavour. Also, Jeanette is aware of the problem of individuals removing dead timber from public land, to the detriment of habitat. The issue that is still a priority for the group is the better control of roadside weeds. The group is also looking at options for a fox control program in conjunction with David Farrar of Parks Victoria.

## Loch/Nyora

It is probably fair to describe the 2010/11 year as 'steady' - no remarkable high points but no major set backs either. And, while the membership declined a little, the work of our Group continued on many fronts. Throughout the year we were represented at the South Gippsland Landcare Network (SGLN) by our past president and current committee member, John Fleming. Max Crawford continued in his role as liaison for the Hilda Falls project. Peter Siggins has our books and finances in excellent order, Daryl Smith

represents us on the Slow The Flow project, Dallas Handley has managed to fulfill all his secretarial duties despite full time work and regular commutes to Melbourne. And the remaining committee members including deputy president Rosemary Knox, Denis Casey and Carmen Barnacle all shared the load.

And while our work continues on many fronts at the very local Nyora/Loch level - supervising tree grants for plantings on public and private land; promoting sustainable landcare practices; implementing projects such as the one at Hilda Falls; supporting the SGLN Landcare Awards; providing weed control advice; and making planting and weed control equipment available - there is also much great work going on in the region via the SGLN. And beyond the regional group we have other active stakeholders, not the least of which is Melbourne Water.

While I described the year just gone as 'steady' it was pleasing to see the LNLG nominated for a regional award. Although the Fish Creek group narrowly beat us, the nomination showed the LNLG is recognised as an active and effective Landcare group, not only in the past year but over the nearly two decades of its existence.

Our priority project is Hilda Falls since it is such a valuable asset to the local community. Recently we planted nearly 500 trees and that will be followed up by 2 weed control activities between now and the new year. Our main focus at the moment is around membership growth and retaining current members. Another area of focus for us is around weed control on public/private land and engaging local/state government

## Mardan/Mirboo North

A great year for Landcare in Mardan-Mirboo North with 4 new members, great community exposure including Arty Gras Display at Mirboo North on Mothers Day Weekend and monthly tree- bee activity throughout the year.

The Mardan Mirboo North Landcare Group was successful in receiving \$20,000 for rejuvenating by revegetating the bare hills and gullies in and around Mardan. The project will

target 6 properties, 8.3ha revegetation, 2.5m fencing, 10,000 tubestock and 1 kg indigenous seed.

The group was successful at the SGLN Landcare Awards with Graeme and Rosemary Trease winning the Primary Producer Award and the Mirboo North Cadets winning the Education Award. Good luck to them at the State Landcare Awards in November.

## Mt Lyall

Our membership has been maintained at around 50 plus landholders (albeit some un-financial) and our financial position remains sound. Our first Group activity in November was a farm walk at the Poowong North property of Anthony and Robyn McNamara followed by an informal BBQ.

A second activity was a farm walk and power point presentation at the property of Joe Seawright and Chris Johnson followed by an enjoyable supper. Joe and Chris' project was subsequently nominated in the 2011 South Gippsland Landcare Awards but unfortunately were unsuccessful on this occasion. Lyn Mitchard and Frank Bugeja attended the awards dinner at Dumbulk supporting Joe and Chris. The Group has purchased an additional 100 trees to complete the road closure project adjacent to the Ferrier's property.

The group continues to provide members with an inventory of plant and equipment for loan and hire very ably maintained by Harold Hillberg and Bill Loughridge. A soil corer was purchased this year. Members of the executive have represented the Group at a number of formal meetings. Lyn Mitchard and Frank Bugeja attended the launch of the Westernport Targeted Land Stewardship Project and the Healthy Soil- Linking Soil Carbon and Soil Acidification with Farm Management Practices Project at Barnacle's property at Loch. Lyn Mitchard, Sandra Verlaat and Frank Bugeja attended the Network Information Session at the Poowong Football Clubroom.

A significant number of members attended a very informative presentation by Geoff McFarlane

on Climate at the Poowong Hotel. Frank Bugeja attended the Healthy Waterways Conversation held by Melbourne Water at Lang Lang, one of many workshops held to develop the next three year Strategic Plan. In addition, members have participated in discussions related to weed problems in the district, establishment of Women in Farming Conversation group and Westernport suspended sediment research. Members have participated in formal training courses organised by the Network including I Farm and FarmPlan 21. Members attended a SGLN presentation/ workshop on the Management of Wet Soils, Drainage, Tracks and Land Slips at Tetoora. One of the highlights of the year, 3 members of the group have been nominated for the 2011 Landcare Long Service Honour Roll, Lyn Mitchard, Marlene Marsden and Bill Loughridge.

## Poowong

The group has had a range of guest speakers over the past year including Gil and Meredith Freeman talking about sustainable gardens and bush tucker plantings; Kate Williams and Kathleen Bartlett explaining the various weed programs and the targeted land stewardship program; WVEKILM contractor Jeff Cochrane on combating weeds. One of our members, Mark Walters was elected to the SGLN Board. Many groups members met at Mark's farm and after Mark explained his methods and expectations, we retired back to his shed to have a very short meeting and witness the design features of the building. The group hosted a climate and carbon meeting which was well attended with people coming from as far away as Bairnsdale, Fish Creek and Mornington. Our Xmas break up was held at the Poowong Hotel for great food and lots of chatter.

Many members attended the SGLN Landcare Awards where Jeff Clark was nominated for an Award. (just missed out though). We held a weed action meeting and as a result of correspondence with the Minister for Agriculture and Food Security, Mr Peter Walsh, he sent one of this team leaders to talk about what we want and how to get it. We farewelled Tony Gardner who

took up a position with the WGCMA and have welcomed his replacement Kathleen Bartlett.

## Prom Plains sub group

The Group didn't hold any activities in the past year. A number of the members were involved in Corner Inlet and Bunurong projects on an individual basis.

With 18 financial members of the sub group, there is still a lot of interest in Landcare with members attending various events hosted by the Network and other groups.

## Tarwin

The Tarwin Landcare group has been actively involved in the Cape Liptrap to Bunurong project with a number of members successful in receiving funding. The group hosted a weather night which was well attended.

With a lot of interest in farm planning following a presentation by Tony Gardner, the group had planned to run a Farm Plan 21 course, unfortunately due to limited resources and timing for DPI the course did not go ahead. The computer based farm planning system – Ifarm course was run instead. The group hopes to be able to direct people into Farm Plan 21 courses locally that are planned for 2011/12.

Weed control and working with Parks Victoria on coordinated fox program are priorities for the group.

## Tarwin Valley

The formation of the new Tarwin Valley Landcare Group just snuck into the 2010/11 financial year. The Tarwin Valley Landcare Group held its inaugural meeting in June 2011 and with a number of landholders already actively involved as SGLN members, the group is up and rearing to go.

Tarwin Valley Landcare Group covers the areas of the Jindanook and Stony Creek Landcare groups, which have both closed. SGLN supported the group's establishment and has received a small grant from the Victorian Landcare Program to help establish the group including a small grants program.

# The Water Sensitive Farm Design project

## Mark Walters has a great vision for his 240-acre property near Loch

and has made significant progress towards greening the bald hills and steep gullies that run into the Bass River. "When I got here three years ago, except for a little bit of revegetation at the bottom of the hill it was all bald hills," he said. "So what I'm undertaking to revegetate the gullies and put in shelter belts for the stock so they have shelter from the cold and shade in the summer, which they don't have that much of at the moment. There are very few trees in the whole valley that are more than 100 years old-it was pretty much all cleared."

Mark has taken advantage of Melbourne Water's Water Sensitive Farm Design project, which provides financial assistance and advice to farmers on a cost share basis for a broad range of work and activities to improve on-farm management practices and support productive land use through the prevention of soil and nutrient loss.

Melbourne Water helped with fencing and revegetating two gullies about a year and eight months ago on the property, using 25 to 30 species indigenous to South Gippsland rainforest ranging from shrubs, bushes and trees. South Gippsland Landcare has also helped with some other revegetation projects.

"One of the reasons for revegetating the gullies is that the stock trash the waterways and make them very muddy," Mark said. "The gullies here are badly eroded, especially with tunnel erosion. But this is only a fraction of what is going to happen with Melbourne Water, as we will finish the rest of the big gully, there is about 700 to 800 metres left and that will be about 20 acres of revegetation. A second gully with very bad tunnel erosion, the tunnels go right from the bottom to the top, and a small section of revegetation around the dam will also be extended right up the gully to the top of the hill."

Mark runs Poll Hereford steers on his property, but has also diversified by planting a commercial timber plantation on about a quarter of the farm. "The plantation trees were put in during October last year, so they are about 11 months old, with the average height being nearly two metres and the tallest trees being around four metres," he said. "The trees are mainly yellow Stringybark for saw log timber, spotted gum for telegraph poles and some Californian redwood, which we may cut down in 80 years if I'm still here. I'd love to see them when they are about three or four hundred years old, but I doubt it."

So far, Mark has fenced and revegetated two gullies and has another four gullies to go. "I need to get everything done before the timber plantation gets to around three years old, as when that is established it will bring in wallabies and I've been told they can wipe out up to 80 per cent of new plants of a revegetation project."

Mark has used a fair amount of tube stock but has also tried direct seeding and a new process called non-mechanical direct seeding on the sides of the hills, which has been done very successfully by planting crews from Bass Coast Landcare. "The enormity of what I'm doing is such that to keep the cost down we have tried non-mechanical direct seeding," he said. "It is a process where they spot spray in circles, scratch the surface and throw a mixed selection of native seed down. It is maybe five times faster than planted tube stock and has been quite successful."

Mark said the challenges of improving the health of the farm and its waterways included the cost of planting, as well as time consuming planting and weed control.

For details on the Water Sensitive Farm Design project contact Kathleen Bartlett at SGLN; email [kathleenb@wgcm.vic.gov.au](mailto:kathleenb@wgcm.vic.gov.au)

This is an edited version of an article that was first published in Southern Farmer, Pg 19, Sept 2011



## 10/11 Group Reports cont

### Triholm

The group have not been very active this year as in having meetings but a few of our group have got funding through Melbourne Water and the Targeted Land Stewardship program.

We have 30 odd financial members and when we have a meeting we usually

have between 8 and 16 members attend. Most of us have been trying to keep our heads above the mud this winter and Russell had a hip replacement done.

The group nominated Anne Bullen and Paul Stewart for a Bushcare Landcare award which they won.

The group was successful in receiving a Support Grant from the PPWCMA.

Triholm meet with DPI to enforce compliance with weeds.

Group member Hannah Staben was also nominated for Landcare Award.

# What's all this about carbon?

Tony Gardner explains "You may have heard a lot about soil carbon lately, as SGLN have been running workshops, field days and farm walks, with more planned for the future. So what is all the fuss about?"

The Federal Government's focus is on a low carbon future - reducing emissions and storing carbon in trees and soils - but let's put that to one side for the moment.

SGLN's Healthy Soils Sustainable Farms project (a Caring for Our Country project managed by West Gippsland Catchment Management Authority) is about carbon for productivity, which means we are talking about humus.

Humus is a stable form of carbon. It is dark, rich completely broken down organic matter which improves the structure of the soil and its ability to provide nutrients to plants. The more of it you have the more likely you are to have a productive farm.

## How do I know how much humus I have?

Testing accurately for humus has not been possible until recently. The CSIRO lab in Adelaide now has a machine that goes "ping" which is currently testing soils right around Australia. Some SGLN members have enrolled to join the DPI program to test their soils. We will be very interested to see the results and will be keeping you informed.

Once you know what humus is, you can tell it's there without an expensive test, even if you can't quantify it. Soil with a high proportion of humus should easily crumble into small pieces but still be moist and hold together well. There are some differences depending on the sand or clay content of the soil and other factors, but the friability and moisture content of the soil will still reflect the amount of humus present.

## How do I build humus in the soil?

Humus relies on the soil biology to break down organic carbon residues. There is carbon in manure, lime, hay, plant sugars, roots, and in fact, pretty much everything. Some of the carbon will be returned to the atmosphere as CO<sub>2</sub>, some will be recycled into plants and animals and some will be exported off-farm.

Humus also contains very stable amounts of Nitrogen (N), Phosphorus (P) and Sulphur (S). Some N can be obtained

through clovers and less accessible P can be mined by active fungal systems in the soil, but it is important to know that humus can't be built without these inputs from somewhere.

The more residues the more opportunity there will be to build humus, so it is a balance between getting the most feed off your pastures and keeping groundcover. Grazing management is very important in retaining residue.

The science shows that building humus will pay off, with plants being able to handle the conditions better whether it's wet or dry, and improved capacity to access important nutrients.

## What now?

Whatever happens politically, it seems inevitable that we will live in society that accounts much more for carbon than ever before. Getting a better understanding of it will help you in your farming operation and prepare you for the future. The WGCMA is bringing Australia's foremost scientist on soil carbon to Leongatha and Traralgon on October 11th and 12th. (see page 18) This event will be followed by a field day on October 21 (see page 19).



# We need your contributions!

*The next edition is planned for Summer 2011, so contributions can be sent through until the end of November.*

*Written material should be sent in by email if possible, although don't hesitate to ring us if you have a story worth publishing. Photos are better scanned from the originals, or supplied as a jpeg file. This newsletter is a non-profit newsletter, which is designed to provide agricultural and catchment management information to land managers throughout South Gippsland. It is directly mailed to over 800 landholders as well as being freely available through the West Gippsland Catchment Management Authority and other agency shop fronts. It is also sent to a wide range of Landcare/agricultural professionals working locally and throughout Australia.*

*The content and management of this newsletter is a joint effort between the Landcare staff in the region, and members of the South Gippsland Landcare Network.*

*If you are interested in placing an advertisement and/or article in the Newsletter or would like to know more, please contact us on (03) 5662 5759 or email [sgln@landcare.net](mailto:sgln@landcare.net)*

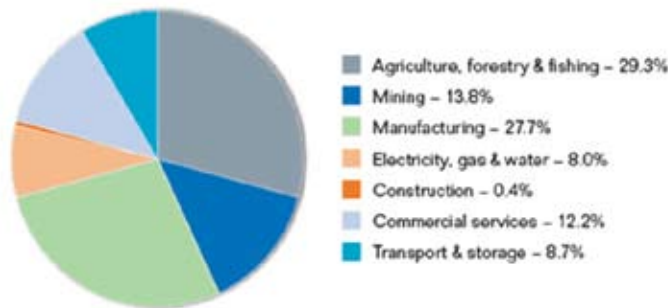
# Carbon Farming Initiative

On 23 August 2011, the Federal Parliament passed the legislation required to implement the Carbon Farming Initiative (CFI). The CFI is a government program through which participants can implement emission reduction projects and receive "carbon credits" which can be sold into carbon markets.

The CFI aims to provide financial incentives for farmers, and landholders to develop projects that will reduce or sequester carbon emissions. The CFI is an adjunct to Government's proposed carbon pricing mechanism (CPM) also referred to as the 'Carbon Tax'.

Although the land sector, including agriculture and forestry, is collectively responsible for about 23 % of Greenhouse gas emissions (agriculture accounts for about 16%); the land sector will be excluded from the CPM scheme and farmers will not have to purchase permits to cover emissions from their own properties.

Australia's emissions sources by sector (2008)<sup>1</sup>



Department of Climate Change (2008). Australia's National Greenhouse Accounts, Australian Greenhouse Emissions Information System, ([www.ageis.greenhouse.gov.au](http://www.ageis.greenhouse.gov.au)), data as at 14 July 2008.

The top 500 emitters in Australia will have to purchase permits to cover their emissions or alternatively offset or reduce their emissions. The Carbon Farming Initiative will allow farmers to generate credits which will be able to be sold into international and domestic carbon markets.

The Carbon Farming Initiative includes:

- Legislation to establish a carbon crediting mechanism;
- Development of methodologies for offset projects; and
- Information and tools to help farmers and landholders benefit from carbon markets.

Legislation to underpin the Carbon Farming Initiative was passed by Parliament on 23 August 2011. The government intends the scheme to be operational from December 2011- however, it only operate fully when and if CPM is passed.

Carbon credits represent abatement of greenhouse gases which is achieved by:

- Reducing or avoiding emissions, for example, through lowering methane emissions from livestock or reducing nitrous emissions in applying fertiliser
- Removing carbon from the atmosphere and storing it in soil or trees, for example, by revegetating part of the farm, or improving soil management on farm in a way that increases soil carbon.

Up until now, carbon credits have purchased on a voluntary basis by individuals or companies to cancel out or 'offset' the emissions they generate during their day-to-day life or normal course of business, for example, by consuming electricity or catching a plane. Once the carbon pricing scheme comes in, farmers will have the opportunity to sell credits in both voluntarily and regulatory/ or compliance markets.

Farmers need to be aware that this will be a quite involved process. Offset projects established under the Carbon Farming Initiative will need to apply methodologies approved by the Government. These will contain the detailed rules for implementing and monitoring specific abatement activities and generating carbon credits under the scheme.

The government is working with industry and other stakeholders, State Government officials and technical experts to develop these offset methodologies. Methodologies can be developed and proposed by private project proponents, as well as by government agencies.

An independent expert committee, the Domestic Offsets Integrity Committee (DOIC) has been set up to assess offset methodologies proposed under the scheme and provide recommendations to the Minister for Climate Change and Energy Efficiency on their approval. Proponents need to ensure that a number of conditions are met in developing methodologies including:

- Permanence – credits must lead to 100 years of abatement
- Additional – activity proposed must be extra and above the landholder's normal practice

There is still a lot of conjecture as to how farmers will be able to participate in the scheme and how worthwhile it may be for them. As with any change in farm management, many factors need to be taken into account in making a qualified decision. It is unlikely that individual farmers will actually set credits directly to carbon brokers; it is more likely that they will work through offset aggregators who will trade credits on behalf of groups of farmers. The administrative costs of setting up offsets and , monitoring and assessing farmers' activities may preclude farmers from operating individually within the carbon market.

The Department of Climate Change and Energy Efficiency estimates that CFI will reduce Australia's total emissions by about 1 to 3 per cent by 2020. While this seems small, it does represent an opportunity for at least some members of the farming sector to look at other means of diversifying income. Cost saving measures and improved production techniques may provide other opportunities.. After all, when a cow or sheep produces methane it is losing potential metabolisable energy and therefore production.

Now that the CFI has been passed by Federal Parliament, it has a 'head start' over the CPM which was only tabled in Federal Parliament last week as part of the Clean Energy Future package of legislation.

Project methodologies and further regulations under the CFI still need to be approved and released, however, the passing of the CFI legislation is a significant step providing the market with some certainty that carbon credits will be able to be created in agriculture. Further confirmation concerning the future of the CFI has been provided by the Coalition's announcement that if it gains power at the next

election it will keep the CFI in place.

The West Gippsland Catchment Management Authority in conjunction with South Gippsland Shire is conducting a Carbon on Farms: Trees and Soil evening to be held at Leongatha on the Tuesday 11th October see below; If you would like to attend contact: Nick Dudley - nickd@wgcm.vic.gov.au or telephone 1300 094 262.

For more information on the CFI visit <http://www.daff.gov.au/climatechange/cfi> Information can also be found on the Department of Climate Change and Energy Efficiency website [www.climatechange.gov.au/cfi](http://www.climatechange.gov.au/cfi)





**Keynote speaker**



**Dr. Jeff Baldock:** CSIRO –Stream leader: Soil Carbon and Nitrogen Balance in Agricultural Lands

Dr. Baldock is actively involved in projects quantifying the content, forms and cycling of organic carbon and nitrogen in soils.

He is leading a national research program aimed at defining the influence of agricultural management practices on the quantity and composition of soil organic carbon.

Dr. Baldock also leads research into the role of organic matter in the net delivery of nutrients to more accurately define fertiliser nutrient requirements.

**To make the most of his visit we have planned two events in Gippsland and would like to invite you to attend**

**Carbon on Farms  
Trees and Soils**

**11th October**

**Dakers Centre – Leongatha  
7.30pm to 9.30pm:**

Overview of the proposed carbon market, the role trees and soils can play in carbon sequestration. Outline of soil carbon, how it can be sequestered and its benefits to soil health and productivity

<b>7.30 pm</b>	Welcome and introductions
<b>7.35 pm</b>	David Griffin (DPI), Carbon on Farms.
<b>8.20 pm</b>	Dr. Jeff Baldock (CSIRO) Soil Carbon cycle and sequestration
<b>9.10 pm</b>	Panel discussion Soil and Tree C sequestration, David Griffin, Jeff Baldock, local farmers and agency staff
<b>9.30 pm</b>	Close – supper provided

NUMBERS ARE LIMITED, REGISTRATIONS ARE ESSENTIAL

**Healthy Soils  
Forum**

**12th October**

**Latrobe Convention Centre – Traralgon  
10.00am to 3.00pm**

The role of carbon in productive agriculture, the evidence base and knowledge gaps for decision making, and a facilitated discussion on soil carbon in future farming enterprises.

<b>9.30 am</b>	Coffee and Tea
<b>10.00 am</b>	Welcome and overview of Forum and Healthy Soils Project
<b>10.20 am</b>	Dr. Jeff Baldock (CSIRO) Soil Carbon in Agricultural productivity
<b>11.20 am</b>	Break
<b>11.40 am</b>	Craig Clifton (SKM) Gippsland Soil Trials Directory - Findings "Science Quality Assessments" improving trials in Gippsland.
<b>12.30 pm</b>	Lunch
<b>1.10 pm</b>	Panel and group discussion. Jenny O'Sullivan (facilitator)
	The Big Picture/ Future Gazing on soil carbon. Jeff Baldock (CSIRO), Declan McDonald (DPI), Neil Baker (MDF), John Gallienne, Kevin Hughes (Farm Consultants), Tony Gardner (WGCMA)
<b>3.00 pm</b>	Close

NUMBERS ARE LIMITED, REGISTRATIONS ARE ESSENTIAL

**Nick Dudley**  
ph: 1300 094 262  
mob: 0428 562 139  
[nickd@wgcm.vic.gov.au](mailto:nickd@wgcm.vic.gov.au)

**Tony Gardner**  
ph: 1300 094 262  
mob: 0429 629212  
[tonyg@wgcm.vic.gov.au](mailto:tonyg@wgcm.vic.gov.au)

# Developing a sense of HUMUS

## A one day workshop exploring soil carbon

**Friday 21st October 2011**  
**Scott and Suzanne Wightman's dairy farm**  
**370 Nicholls Road, Mardan**  
**10.00am –2.00pm**

### Speakers include

- Kevin Hughes—Soilwise Services. Kevin has been working with the Wightmans for many years and has documented changes in the soil over this time. He will describe how various management actions have contributed to humus formation and carbon sequestration.
- Jess Horton DPI Ellinbank on the Soil Carbon benchmarking project.
- Tony Gardner, Healthy Soils - Sustainable Farms Project Coordinator, West Gippsland Catchment Management Authority.
- Jill Vella, South Gippsland Landcare Network, introducing a new soil improvement focus group project where participants are given help to soil test and develop a management plan to implement soil improvement actions.

Please RSVP to Jill Vella, South Gippsland Landcare Network for catering purposes. (03)5662 5759, 0417 380273  
jillv@gcma.vic.gov.au



CARING FOR OUR COUNTRY

## Koala research information day

A koala research information day is being held to promote the extensive research being undertaken by Monash University into the genetic diversity and behavioural patterns of our Strzelecki Koala.

The information to be covered on the day includes: The non invasive research methods undertaken How faecal pellets are collected on forest floors and how DNA is extracted from these pellets Information obtained from DNA samples such as potential genetic diversity of the Strzelecki koala, estimated population size and how we can contribute to future koala management And most importantly how you can get involved!!

Guest speakers for the event are Monash University researchers Dr. Wendy Wright and Dr. Fiona Hogan

When: Thursday October 27

Time: 10 am to 1 pm (Lunch Provided)

Where: WGCMA Board Room

Corner Young & Bair Streets

Leongatha

(SGLN office)

To RSVP\* to this event contact Courtney Lever on 5662 5759

or email courtneyl@gcma.vic.gov.au

\*RSVP is essential for Catering and dietary requirement purposes





BY THE TANK  
OR BY THE TANKERFULL  
EVANS PETROLEUM DELIVERS



RANGE OF PRODUCTS AND SERVICES ON OFFER :-

- Fuel, Oils and Autogas - for more information on our fuels see our website [www.evanspetroleum.com.au](http://www.evanspetroleum.com.au)
- Assorted Lubricants - Car Care and Automotive products Gas exchange 'swap-n-go'
- Firewood & kindling
- All sites offer hot fast-food & Coffee (excluding Westside and Foster)
- Prepaid Vouchers - Full range of prepaid phone vouchers as well as assorted iTunes vouchers
- Tobacco Products
- Cold Drinks and Milk - Great range of carbonated drinks, water, juices, energy and sports drinks, as well as a full range of flavoured milk
- Confectionery and Snacks - all your favourite chocolate bars, sweets and gums, chips and nuts with a full range of ice creams are available
- General Merchandise - Mobile Phones, batteries, torches, maps and directories, hats, sunglasses and sunscreen
- Groceries - offering a variety of convenience goods
- Ice
- Magazines and Newspapers
- CD's and DVD's - music and movies
- Fishing Tackle/Bait - We stock a range of tackle including soft plastic and hard bodies lures and bait
- Evans, BP, Visa, Master, Amex, Diners, Motorcharge, Motorpass, Fleet cards accepted
- Male/Female public toilets

LOCATIONS

COWES TOORA LEONGATHA MIRBOO NORTH FOSTER INVERLOCH WONTHAGGI KORUMBURRA YARRAM FISH CREEK

General Correspondence to: 22 Hughes St, Leongatha Vic 3953 P: 03 5662 2217 - F: 03 5662 2259  
Postal: PO BOX 588, Leongatha Vic 3953



SGLN Board

**Chair** Stephen Hoole

**Vice Chair** Damon Stynes

**Treasurer/Secretary**

Dawn Marotti

**General Members**

John Fleming, Mark Walters,  
Rob Jones, Rosemary Trease, Jan  
Fell, Arie Bos, Diana Droog, Jean  
Carnell and Mark Uren

Koala gift cards - The South Gippsland

Landcare Network has donation gift cards available again for Christmas gift giving. Cards start at \$20.00 but you can donate as much as you like.

We have the perfect gift for Christmas..... A South Gippsland Landcare Network Koala Gift Card will please any recipient by donating to Koala habitat restoration, in amounts starting at \$20.00. A koala gift card acknowledges a tax deductible donation that has been made to the South Gippsland Landcare Network.

Our koalas need help to survive and thrive, and you can contribute to returning suitable trees and wildlife corridors to the Strzelecki Ranges.

All you need to do is write your own message and send it off. If you would like more information on our gift cards, please visit our website [www.sgln.org.au](http://www.sgln.org.au) or or call Courtney or Belinda. A great alternative to traditional gift giving this year with a significant feel good factor.



SGLN Staff  
Contact Details

Network Coordinator

Belinda Brennan 0409 004 901

Project Officer

Jill Vella 0417 380 273

Project Officer

Kate Williams 0428 317 928

Project Officer

Kathleen Bartlett 0400 141 929

Network Notes

The SGLN monthly email newsletter is now emailed directly to all members who have provided us with their email address. If you would like to receive Network Notes, please email your address to [sgln@landcare.net](mailto:sgln@landcare.net)

If you already receive Network Notes and change your email address, please let us know - we would hate for you to miss out!